



Office of the Superintendent of
Financial Institutions Canada

Bureau du surintendant des
institutions financières Canada

Office of the Chief Actuary

Bureau de l'actuaire en chef

HRSDC Roundtable on Enrolments

Office of the Chief Actuary
29 November 2007



OSFI
BSIF

Canada 

OCA Mandate

- The OCA is responsible for the actuarial valuations of the CPP, Old Age Security (OAS) program and federal public sector employee pension and insurance plans.
- Since 2001, the OCA has also been responsible for undertaking the actuarial review of the Canada Student Loans Program (CSLP).
- The OCA prepares actuarial reports as required by legislation including reports on proposed changes to the CPP introduced in Parliament.



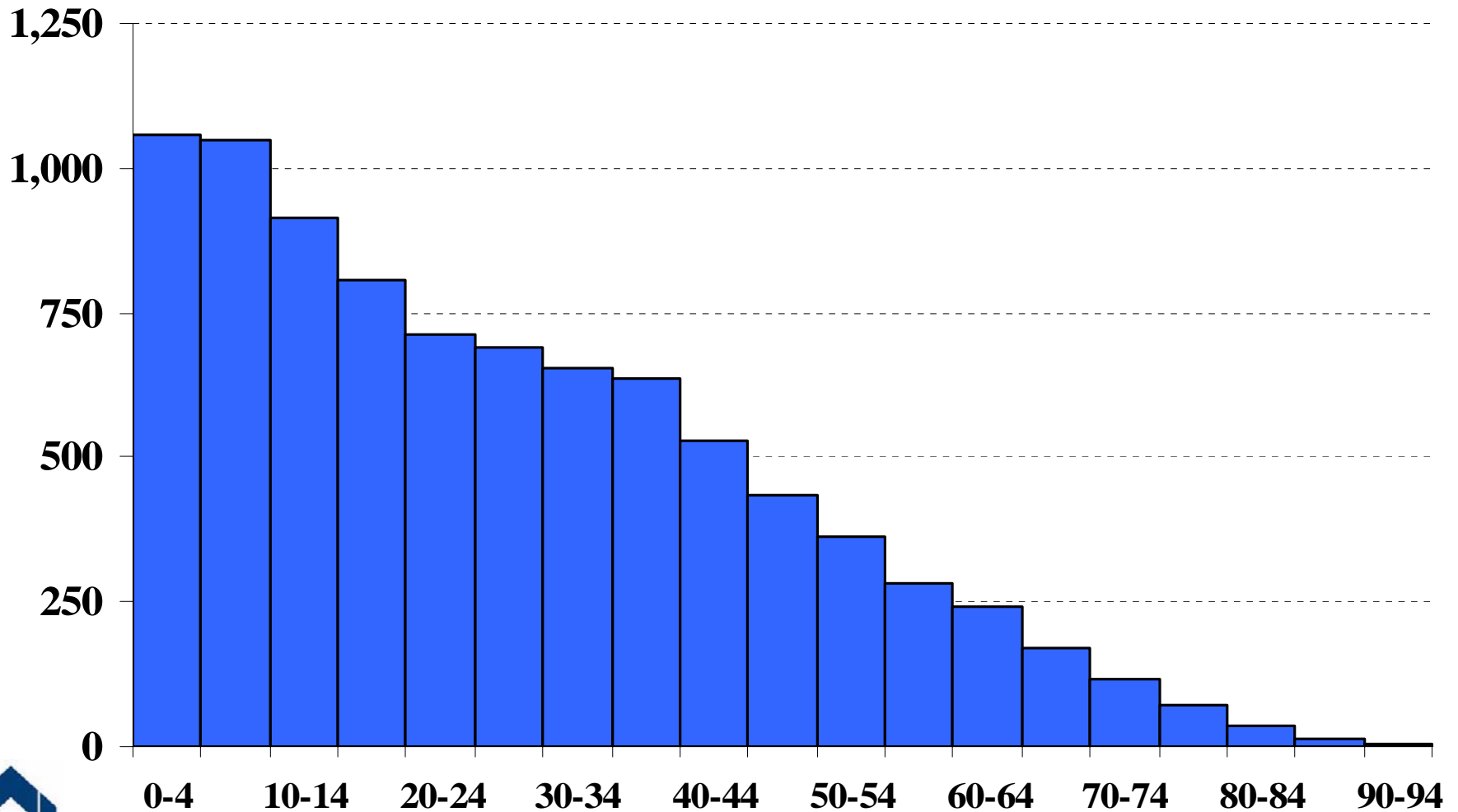
Demographic & Economic Assumptions

- Demographic Based on the CPP 23
- Aging factors
 - Reduction in Mortality rates
 - Fertility rate: 1.6 per woman in 2016
 - Net migration: 0.54% of the population in 2020
- Economic
 - Evolution of labour force (CPP 23)



Canadian Population 1921

Thousands



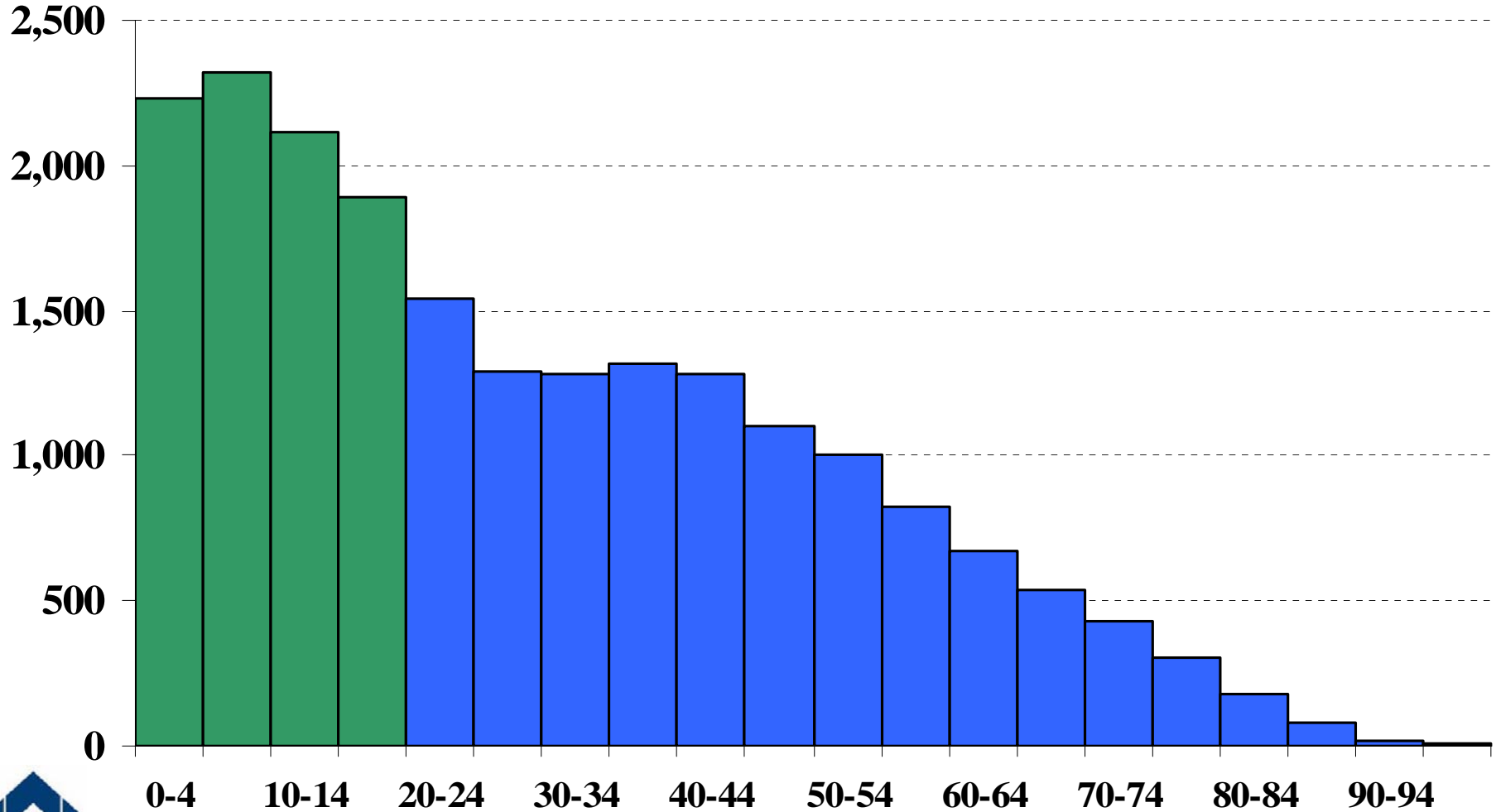
OSFI
BSIF

Office of the Chief Actuary Bureau de l'actuaire en chef



Canadian Population 1966

Thousands



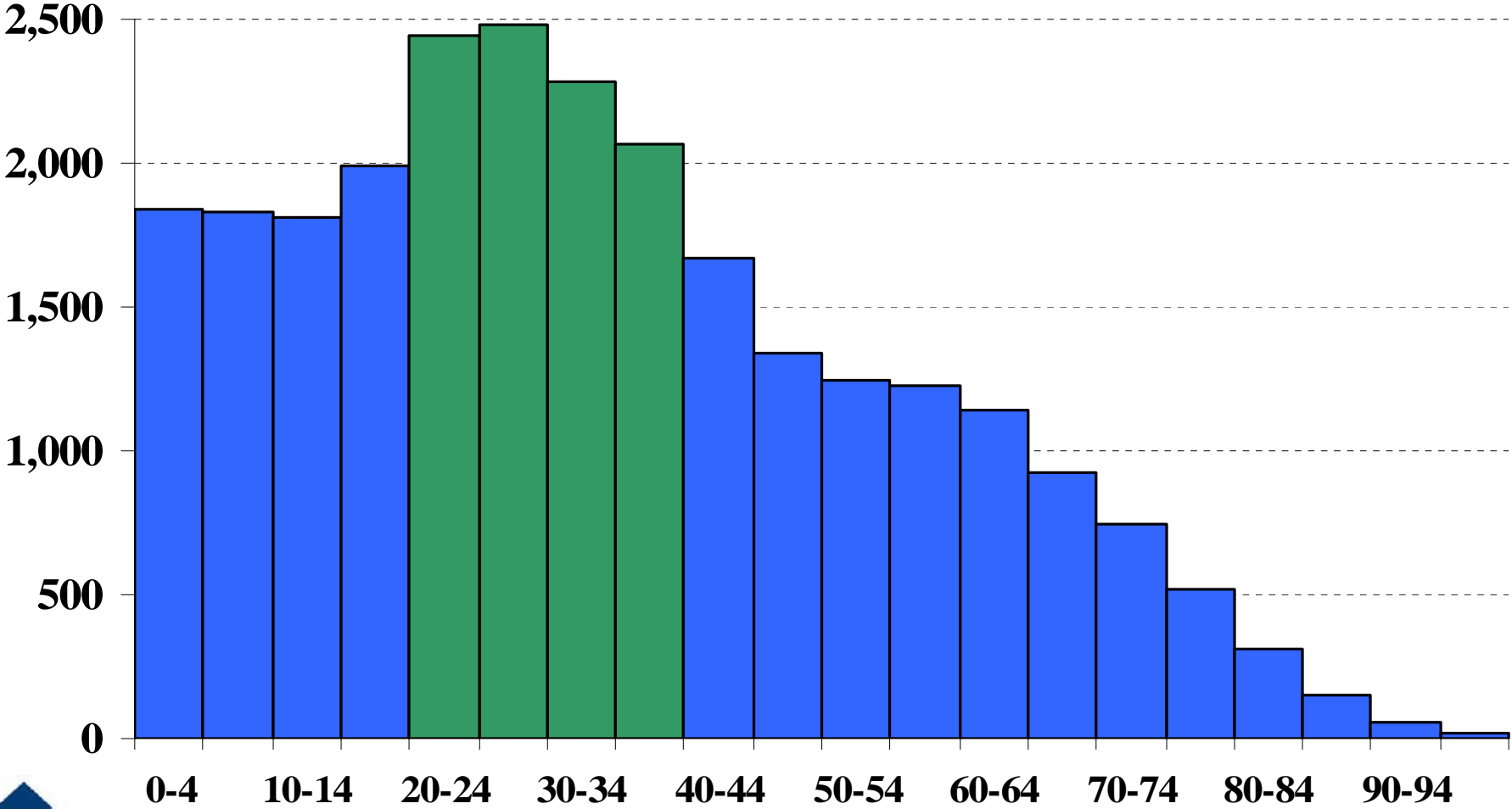
OSFI
BSIF

Office of the Chief Actuary Bureau de l'actuaire en chef



Canadian Population 1986

Thousands



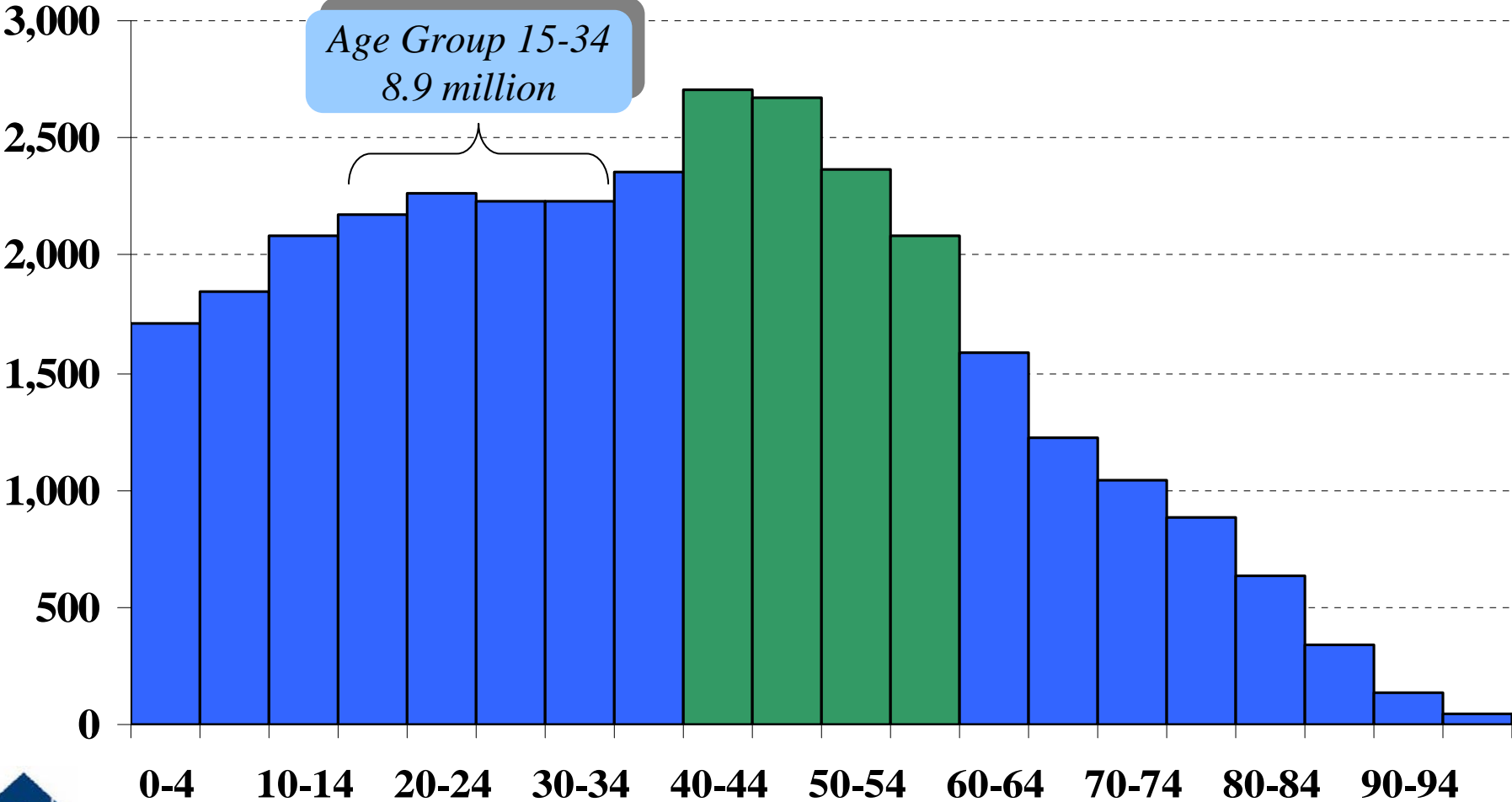
OSFI
BSIF

Office of the Chief Actuary Bureau de l'actuaire en chef



Canadian Population 2006

Thousands



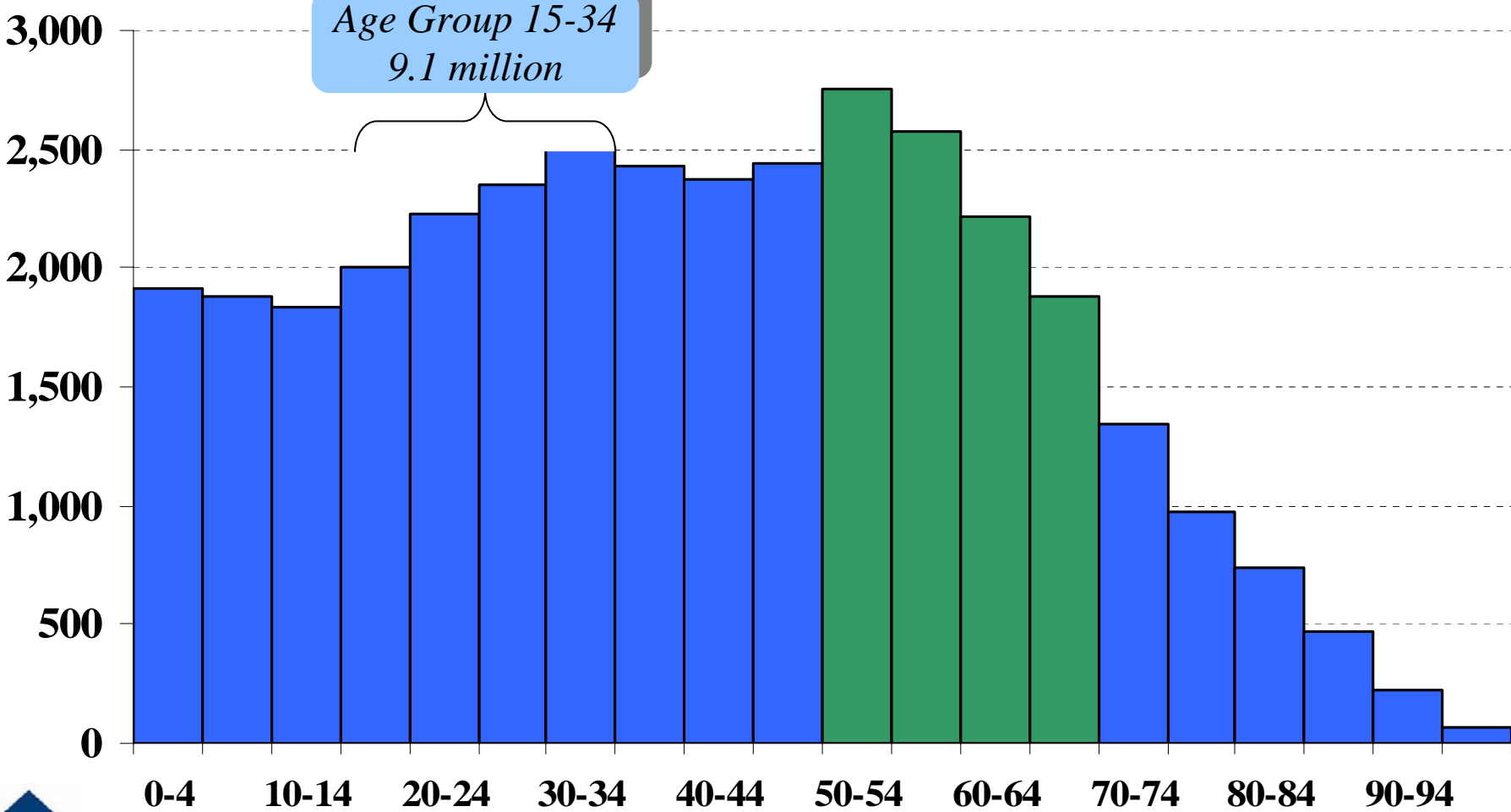
OSFI
BSIF

Office of the Chief Actuary Bureau de l'actuaire en chef



Canadian Population 2015

Thousands



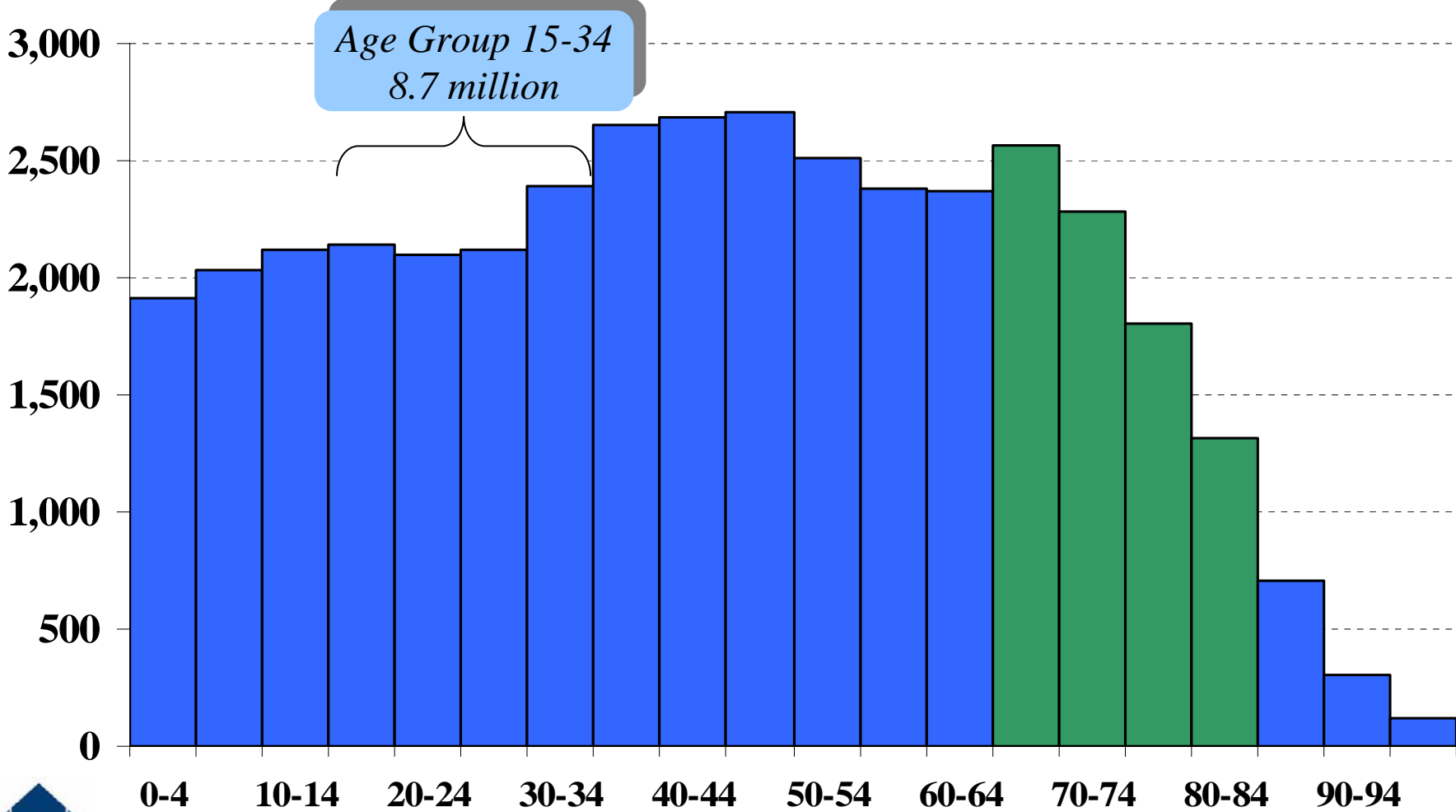
OSFI
BSIF

Office of the Chief Actuary Bureau de l'actuaire en chef



Canadian Population 2030

Thousands

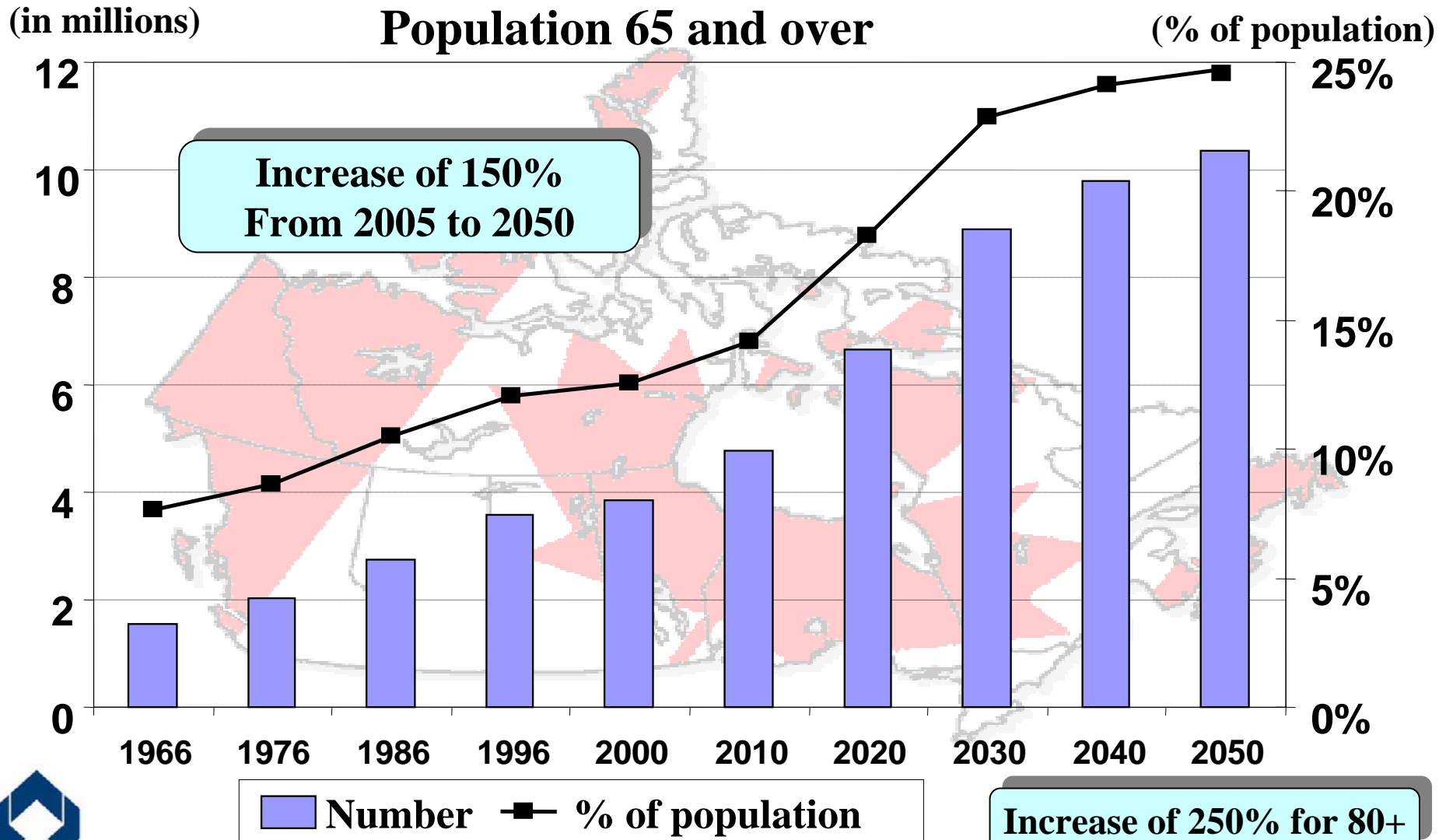


OSFI
BSIF

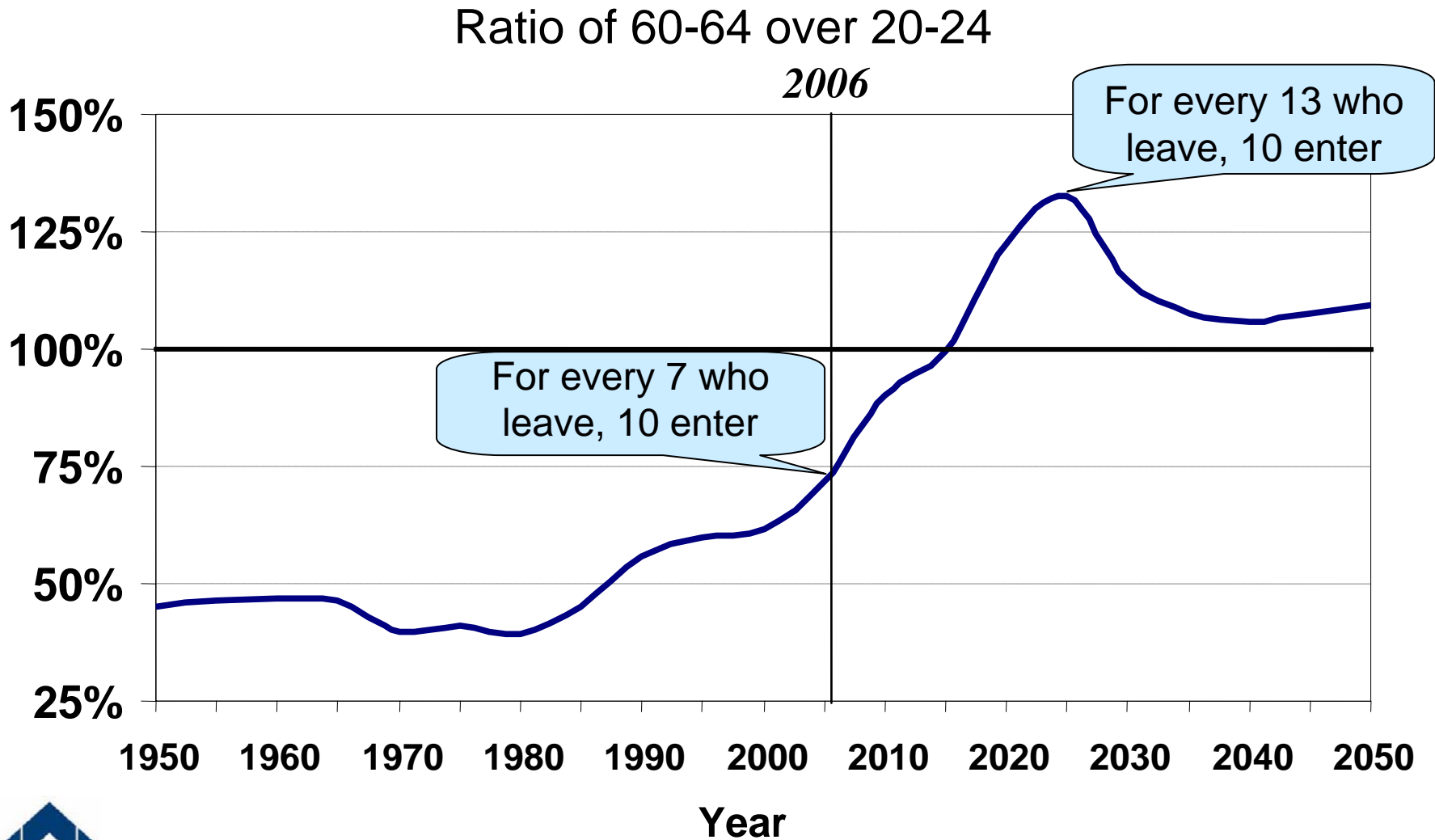
Office of the Chief Actuary Bureau de l'actuaire en chef



Aging of the Canadian Population



Future Labour Shortage, likely or not?

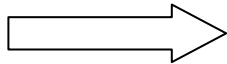
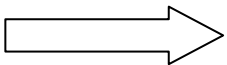


OSFI
BSIF

Office of the Chief Actuary Bureau de l'actuaire en chef

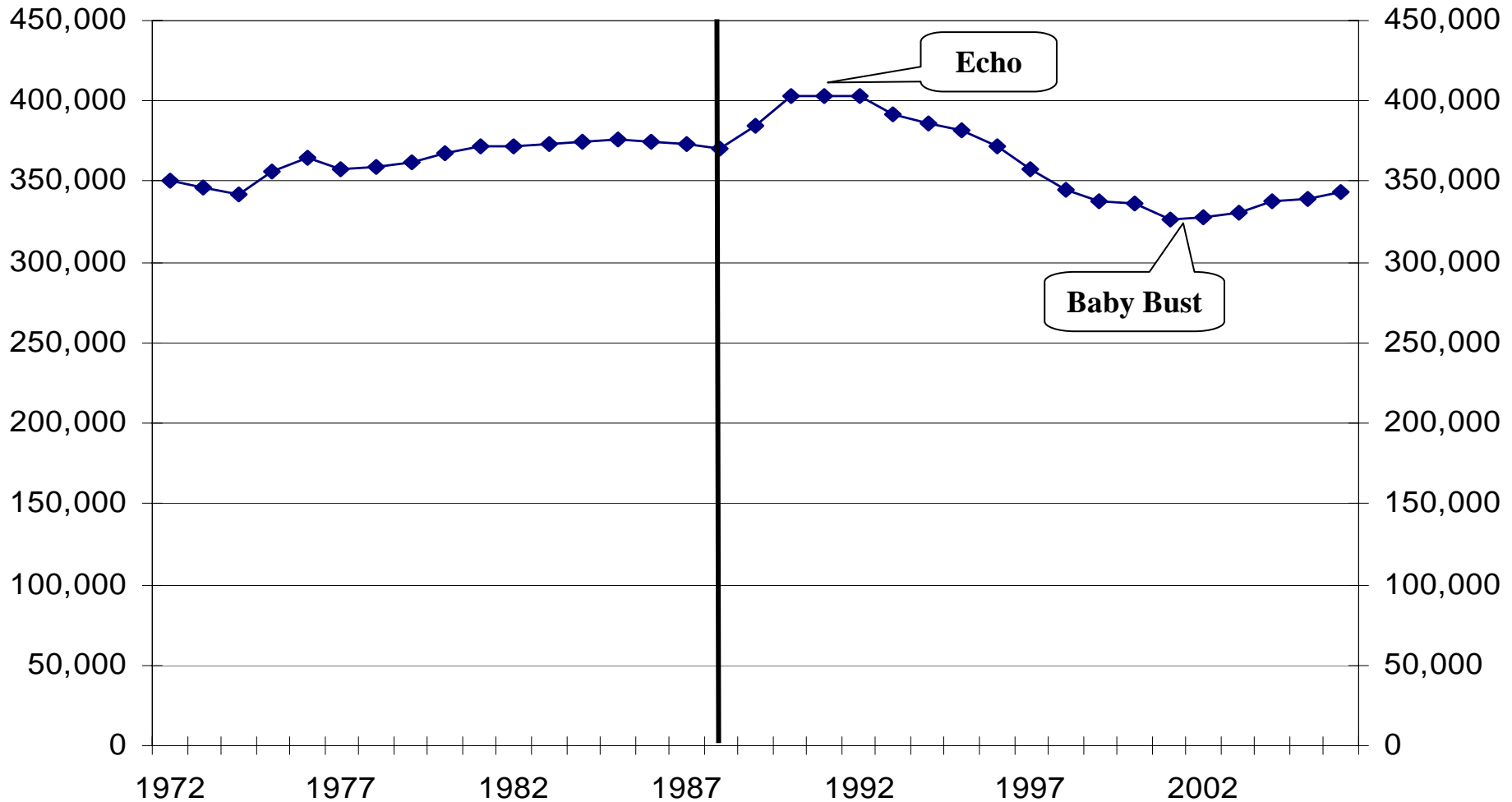


Demographic Situation

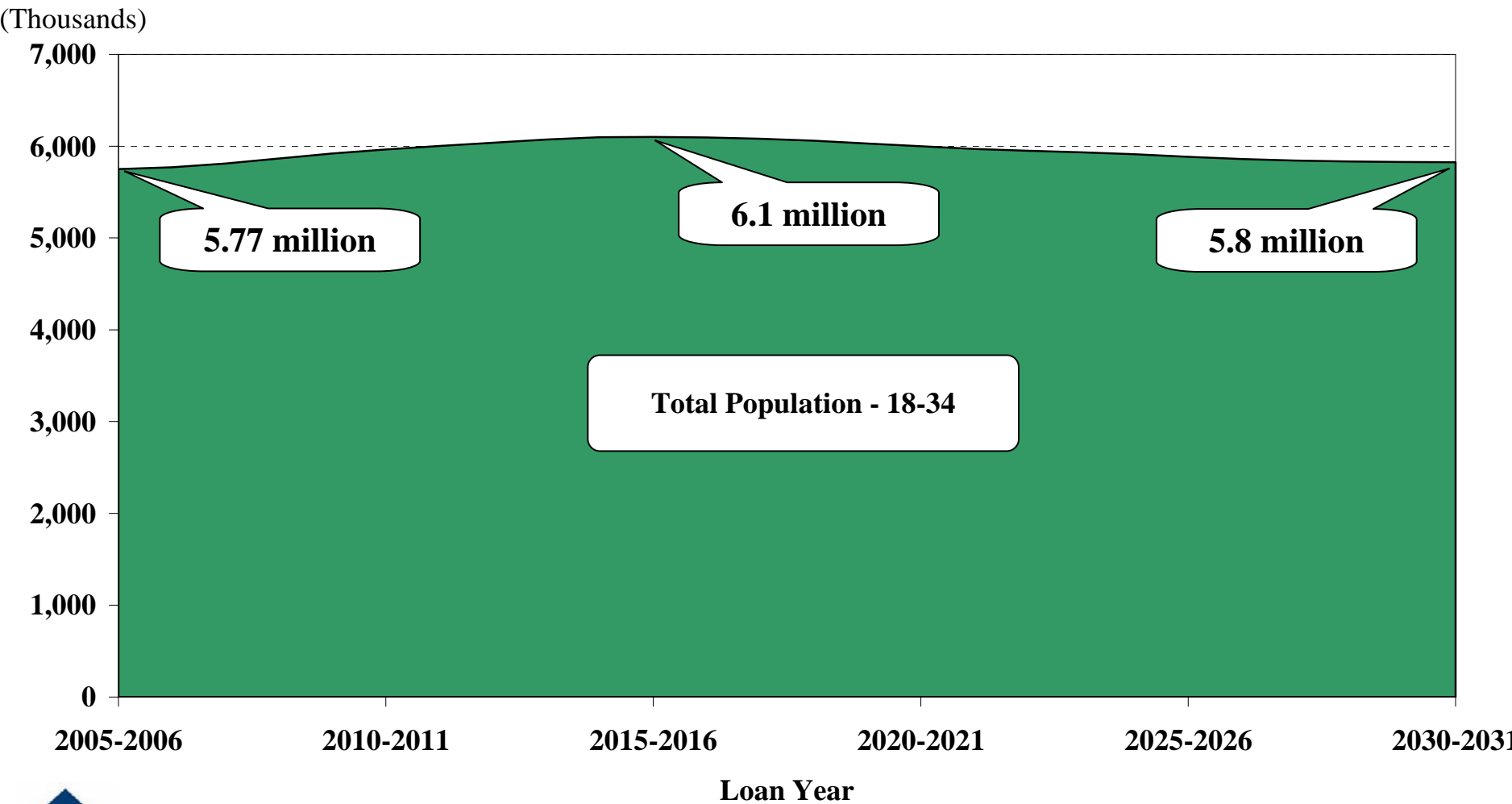
- Analysis of current population important
- Individuals in projection period already born
- Fertility rates (Number of births)
 - Baby-boom  Echo
 - Baby-bust  Decrease in births



Evolution of the number of birth



18-34 Population in Participating Provinces



OSFI
BSIF

Office of the Chief Actuary Bureau de l'actuaire en chef



Work-to-School Transition

- As the baby boomers retire, there will be increased pressure on the student demographic to replace them.
- Students will spend less time in University/College because there will be good jobs available for them.
- More students will enter the work-force straight out of school and the participation rates for the youths will continue to increase.



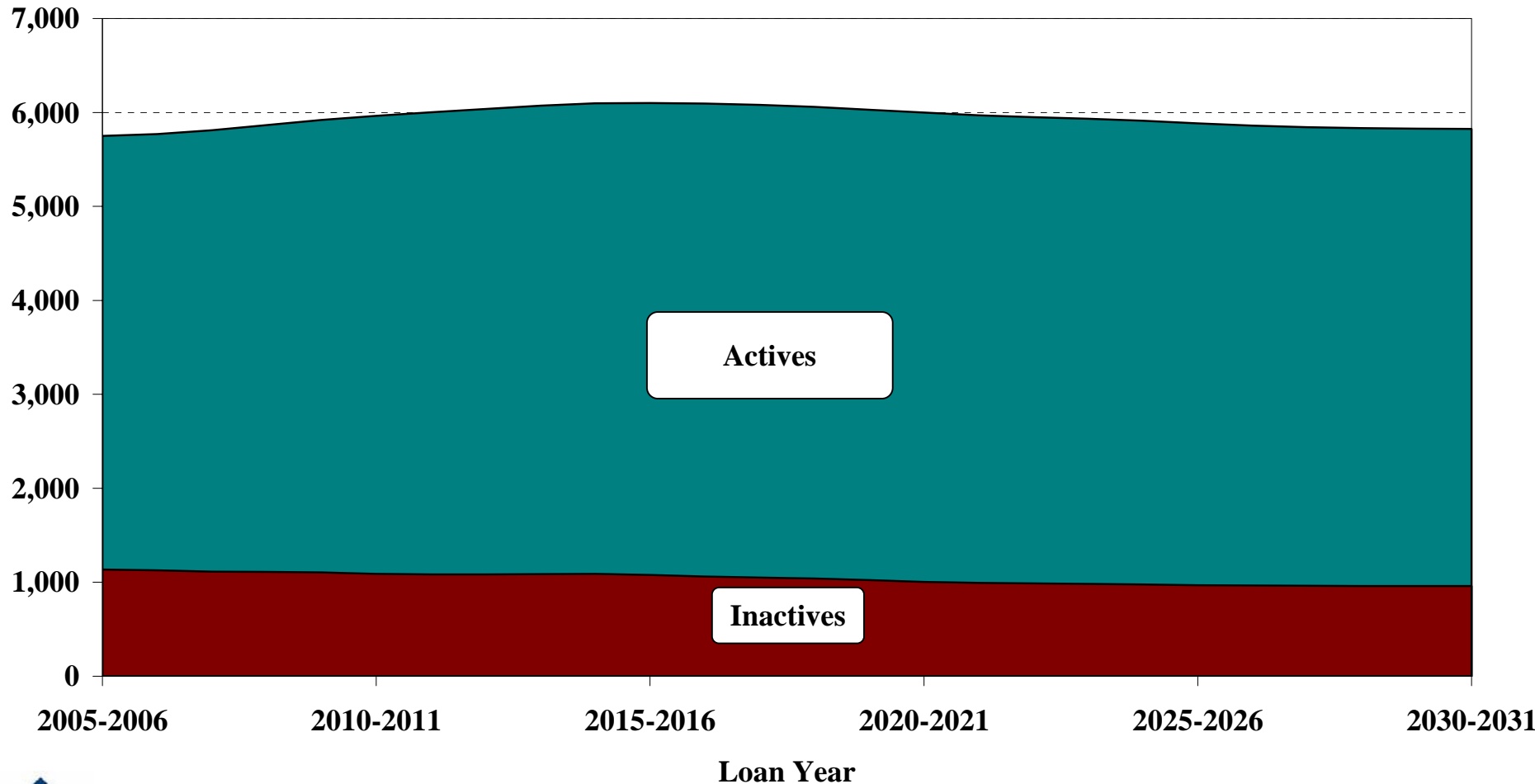
Participation Rates, Canada (both sexes)

Year	Age Group			
	15-19	20-24	25-29	30-34
1996	0.48	0.76	0.84	0.85
2006	0.54	0.79	0.86	0.87
2015	0.56	0.80	0.86	0.87
2030	0.56	0.81	0.88	0.90



18-34 by Labour Force components for Participating Provinces

(Thousands)



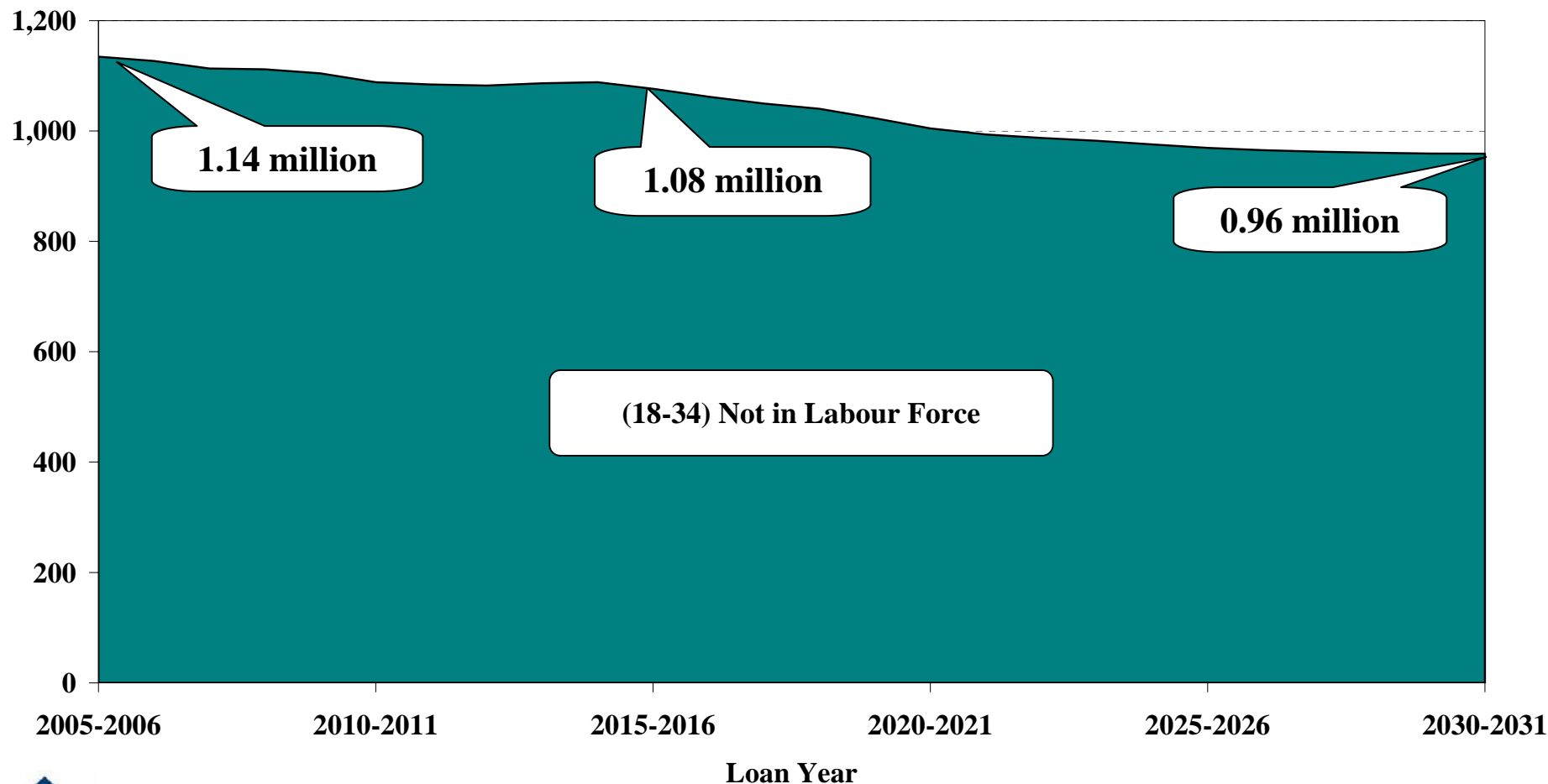
OSFI
BSIF

Office of the Chief Actuary Bureau de l'actuaire en chef



Population Not in Labour Force (18-34) for Participating Provinces

(Thousands)



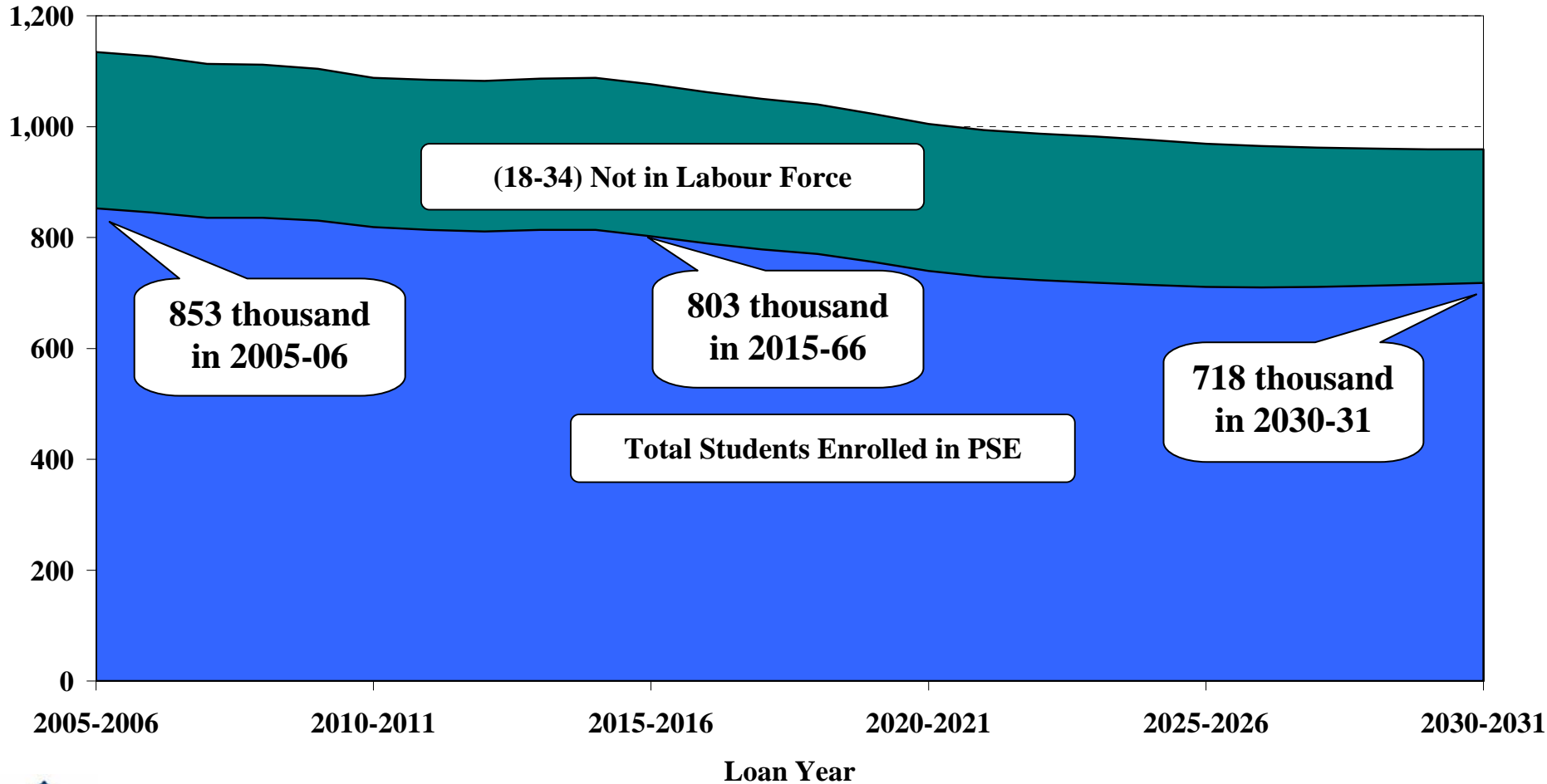
OSFI
BSIF

Office of the Chief Actuary Bureau de l'actuaire en chef



Full-Time Post-Secondary Enrolment (18-34)

(Thousands)



OSFI
BSIF

Office of the Chief Actuary Bureau de l'actuaire en chef



Summary - Past

- Baby-boom \implies major influence
- Influenced school-to-work transition
 - 1990s: more likely to be in school
 - Poor labour market conditions
- School-to-work transition increased
- Labour market still difficult but improving
- Lowest unemployment rate in the last thirty years

Summary - Future

- Lower labour force growth (expected)
- More job opportunities for young
- School-to-work transition period shorter
- Enrolments are expected to fall by 16 % over the next 25 years

